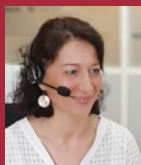


Key figures

2022 - 2023



Limagrain   
from earth to life

## Research

More than  
**100**  
research centers

**301 M€**  
invested in research  
and development\*

Around  
**6,000**  
varieties in portfolio

 **2,192** employees  
work in research

 **257** new varieties  
launched in  
2022-2023

## Some examples of environmental and extra-financial performance

  
**5.3 M€**

devoted to **361** initiatives  
to reduce the impact  
of environmental activities



**91,714 tCO<sub>2</sub>e**  
emitted (Scopes 1 & 2)



**527,098 MWh**  
of energy consumed, of which **6.4%**  
is renewable energies



**3,212,420 m<sup>3</sup>**  
of water consumed, of which  
**499,743 m<sup>3</sup>** is mains water



**38,794 t**  
of waste produced, of which  
**68.6%** is recovered



**2 M€**  
devoted to social and  
philanthropic initiatives

# Limagrain, a seed and agri-food international group

**No. 4 seed company in the world**



**No. 1 worldwide**  
for vegetable seeds



**No. 6 worldwide**  
for field seeds



**No. 1 in Europe**  
for rapeseed



**No. 1 in Europe**  
for functional flours



**No. 2 French**  
industrial baker  
with the brands Jacquet  
and Brossard



## An agricultural cooperative as parent company, firmly rooted in its region

**1,300**  
farmer members

**46,500 ha**  
of production  
under contract in  
Limagne Val d'Allier

# The business lines of Limagrain

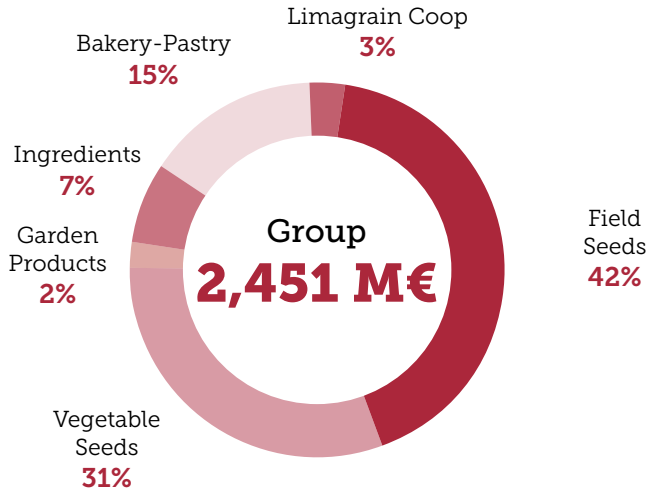
**2,451 M€**

of sales\*

(+16.3% with current data,  
+15.1% on a like-for-like basis)

Sales in  
almost  
**150**  
countries

## Analysis of consolidated sales\* by business line (as a %)

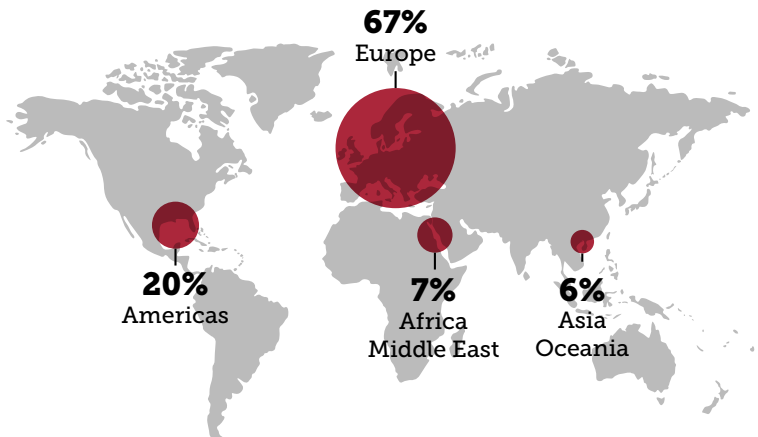


**53**

countries

(including strategic partnerships\*)

## Analysis of consolidated sales\* by geographical area (sales of products - as a %)



**775 M€**

of sales

from main strategic partnerships\*

\* Definitions of these terms are given in the glossary on the last page of this document.

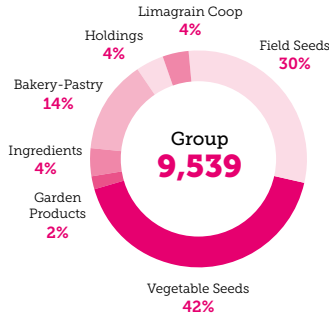
# The women and men of Limagrain

**9,539**  
permanent staff

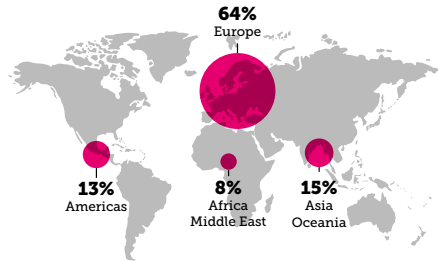
**84**  
nationalities

**55.5%**  
of permanent staff outside France

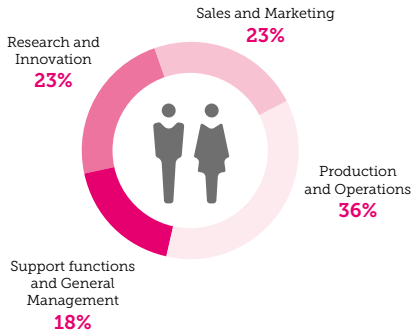
## Analysis of permanent staff by business line (as a %)



## Analysis of permanent staff by geographical area (as a %)



## Analysis of permanent staff by function (as a %)



## Analysis of permanent staff by gender and level of responsibility



**8.9**

accidents per million hours worked

*Accident frequency rate with and without work stoppage (FR2)*

**Safety goal by the end of 2026:** to reduce the FR2 to **6**

**30%**

of women among managers and **16%** among executives

**Diversity goal by the end of 2026:** at least **30%** of women among managers and executives

---

## Instructions for distribution of key figures

The Group's key figures are established in compliance with the IFRS (*International Financial Reporting Standards*) reference, as applied by the European Union on June 30, 2023.

The evolution of data for fiscal year 2022-2023 is analyzed in current data and like-for-like basis.

Like-for-like basis is data that is restated for constant scope and currency translation. Thus, financial data for 2021-2022 is restated to take into account:

- The impact of currency translation,
- Changes to the consolidation scope.

---

## Glossary

- **Sales:**

Sales reported in this document correspond to revenue from ordinary activities.

- **Sales invested in research and development:**

The sales of seeds for activities intended for professional markets and integrating 50% of AgReliant's business.

- **Strategic partnerships:**

Strategic partnerships in which Limagrain holds more than 30% of the capital: AGT, AgReliant, Canterra Seeds, Carthage Génétique, Hengji Limagrain Seeds, Prime Seed Co, Seed Co, Soltis.

HEAD OFFICE:  
Biopôle Clermont-Limagne  
14 rue Henri Mondor  
F-63360 Saint-Beauzire

POSTAL ADDRESS:  
CS 20 001  
F-63360 Gerzat  
Tel.: +33 (0) 473 634 000